

www.aleana.ua

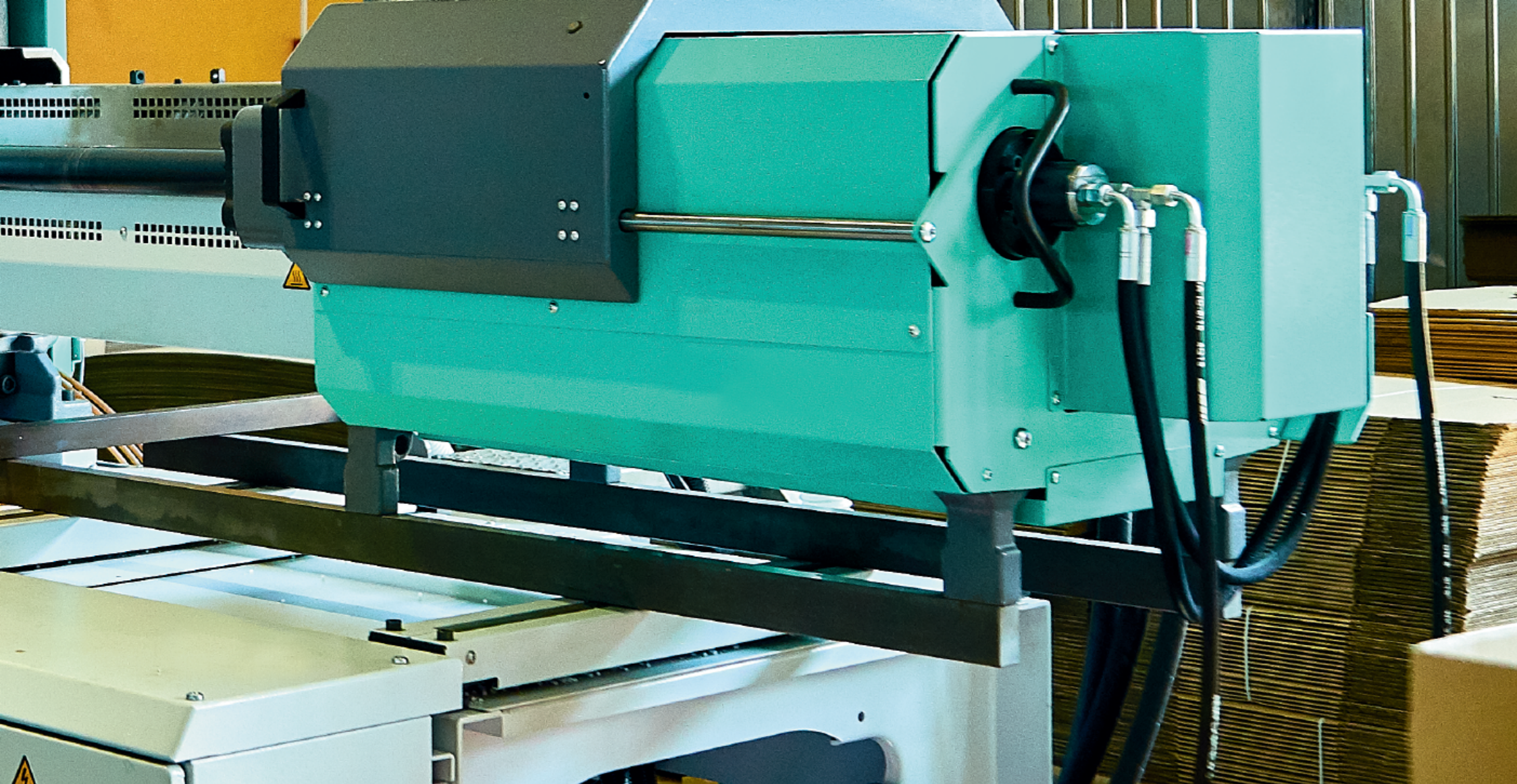


PRESENTATION
OF THE COMPANY



2024





2024

The leading Ukrainian manufacturing company of household plastic products, produced by injection. The range of products is: plastic furniture, household and kitchen goods, products for garden. The company was founded in 2002. The company employs 350 people of personnel. Production capacity of the company consists of 36 modern injection molding machines with clamping force from 50 to 1600 tons. Raw materials used in the production process: polypropylene, polystyrene, polyethylene. The company has an extensive distribution network and operates in Ukraine, CIS countries and Europe.



Raw materials used in the production process: polypropylene, polystyrene, polyethylene. The company has an extensive distribution network and operates in Ukraine, CIS countries and Europe. Operating on the market since 2002, the company "Aleana" has a spotless reputation in customer relationships. Warehouses are equipped with technologies for quick loading of the goods. Logistic department forms a route for convenient and quick delivery product to the customer. For today, company's product range consist of five product groups: household and kitchen products, products for garden, goods for children, plastic furniture. The product range of constantly expanding, our designers develop a new models and designs. Basic principles of our work - high quality, reasonable prices, fast delivery. The company is worried about preserving the environment, in the production we use only energy-saving technology, economical use of natural resources and raw materials, successfully works system of waste recycling. The company operates in accordance with the international quality management standarts ISO 9001:2008 and has the corresponding certificate number NQSP-0061/09-13. Of particular relevance is paid to quality control of the products. Quality control is carried out, at every stage of production:

- Quality inspection of raw materials using own laboratory
- Control of the production stage of products, as well as on assembly and packaging stages, constantly carried out by quality control service.
- Control of shipping and warehousing by means of video surveillance.

Due to the above mentioned steps, the customer is always receives products that meet the highest quality standards.

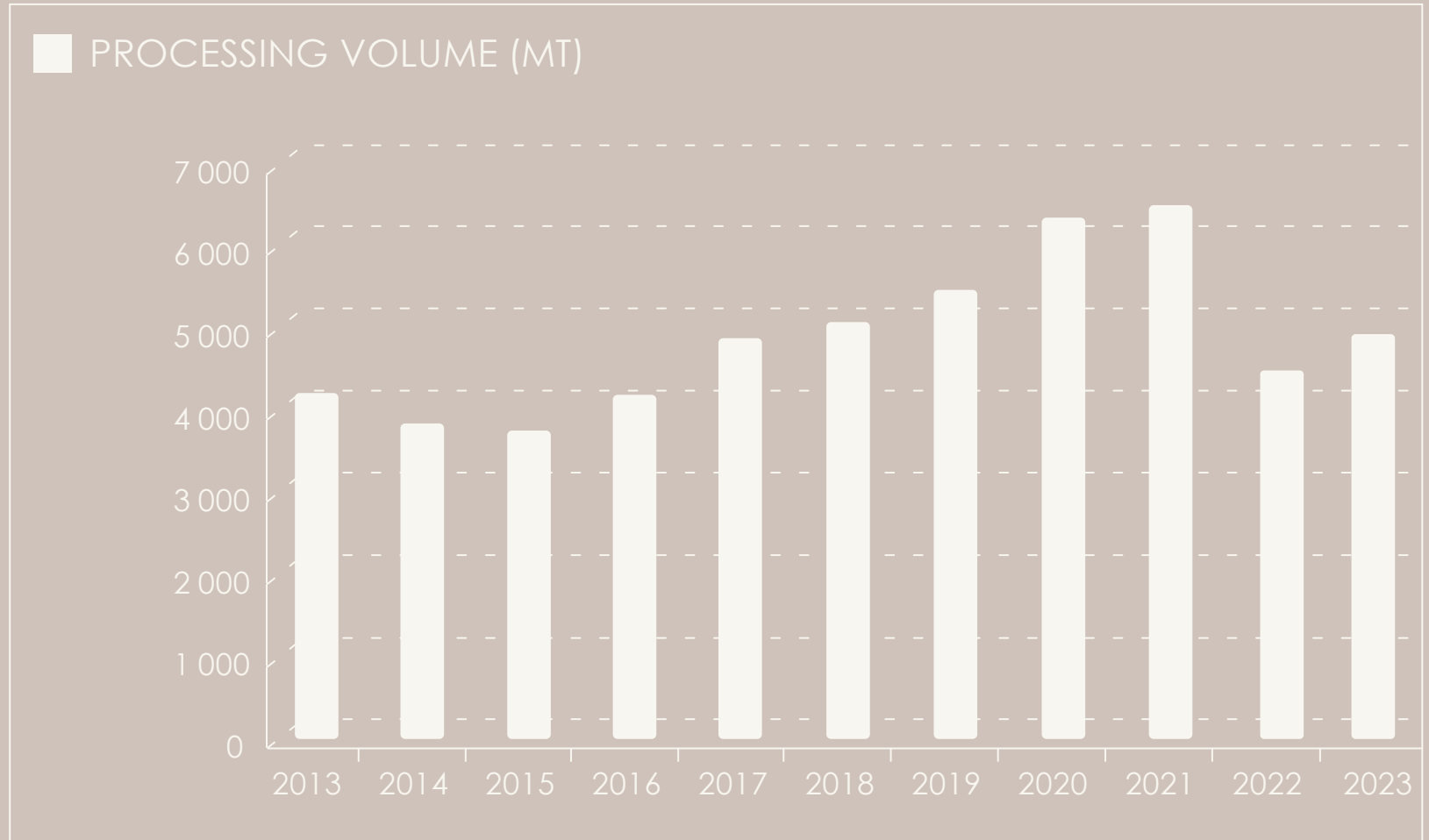
PERIOD



PROCESSING
VOLUME (MT)

2013	4 081
2014	3 702
2015	3 612
2016	4 053
2017	4 732
2018	4 936
2019	5 329
2020	6 114
2021	6 145
2022	4 230
2023	4 583

PROCESSING VOLUME (MT)

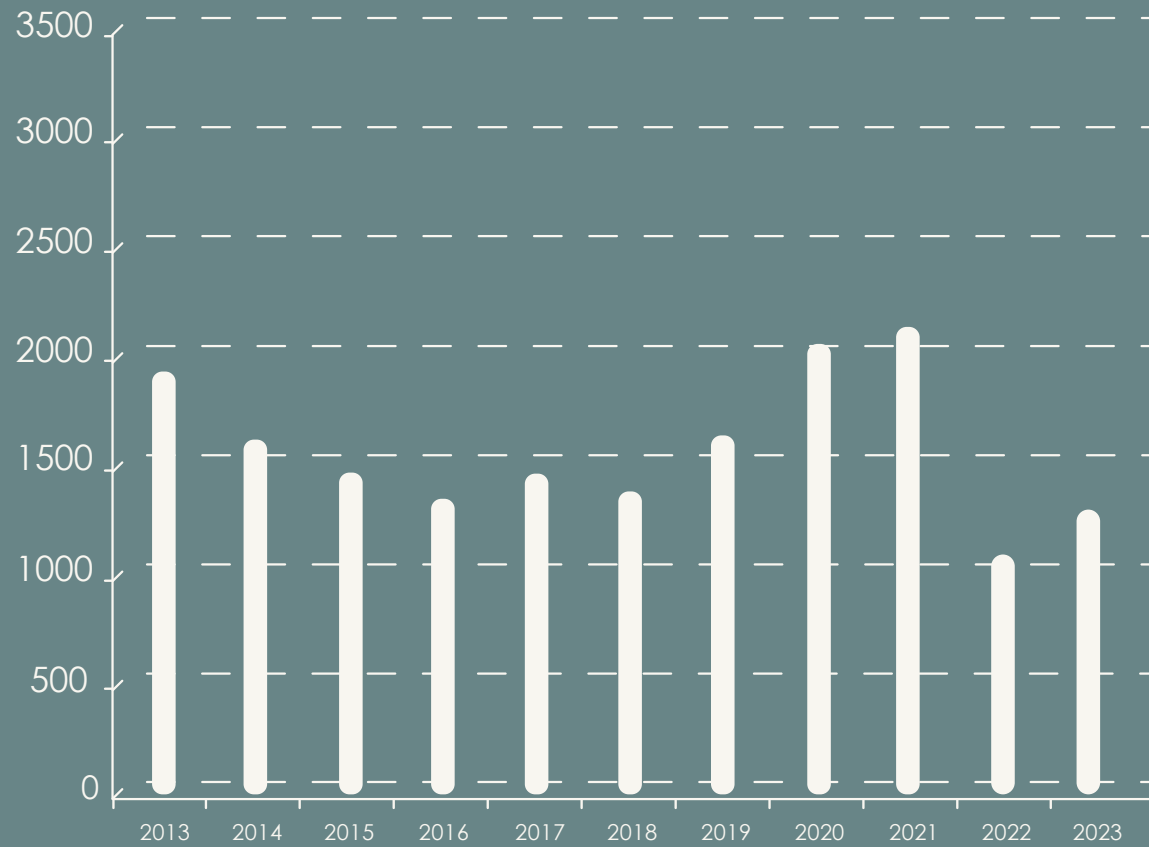


PERIOD



Goods for the garden

2011	2 022
2012	2 098
2013	1 904
2014	1 595
2015	1 443
2016	1 323
2017	1 440
2018	1 356
2019	1 612
2020	2 033
2021	2 109
2022	1 009
2023	1 356



■ Goods for the garden



MARKET :

SYSTEMATIZATION of
CONSUMERS by TYPE
of MARKET

product groups
market type
industrial market

for the garden

greenhouses
flower shops
horticultural
centers

market reseller

wholesalers
dealers
stores and
supermarkets

consumer market

end user

FLOWERPOTS
and PLANTERS



GARDEN



FLOWERPOTS
IBIS with insert



FLOWERPOTS
GLORIA



FLOWERPOTS
with wattering
«GLORIA»



FLOWERPOTS
MATILDA



GARDEN

FLOWERPOTS
and PLANTERS

GARDEN



FLOWERPOTS
DAMA



FLOWERPOTS
TERRA



FLOWERPOTS
for cactus



FLOWERPOTS
NIKA



FLOWERPOTS
ORHID



FLOWERPOTS
ORHID oval



SUPPORT
for orchids





FLOWERPOTS
LEON



FLOWERPOTS
FLORA



GARDEN

FLOWERPOTS
and PLANTERS

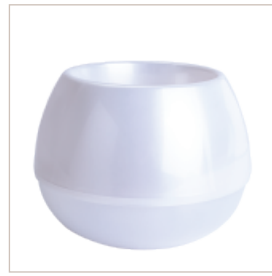


FLOWERPOTS
BOHO



FLOWERPOTS
BOHO LOW





FLOWERPOTS
SPHERE



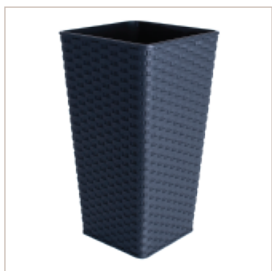
FLOWERPOTS
SMILE



FLOWERPOTS
«FUSION»



FLOWERPOTS
«FUSION»
with insert low



FLOWERPOTS
«RATTAN» square



FLOWERPOT
«RATTAN» with tray



FLOWERPOTS
«GAMMA»



FLOWERPOTS
«GAMMA»
with decor



FLOWERPOTS
DEKO



FLOWERPOTS
«CANOE» with insert



FLOWERPOTS
«GAMMA»
with decor



FLOWERPOTS
«QUADRO»
low



FLOWERPOTS
«ALPHA»



FLOWERPOTS
«QUADRO»

GARDEN

FLOWERPOTS and PLANTERS



FLOWERPOT «RATTAN»
BALCONY WITH INSERT



FLOWERPOT «FENCE»
BALCONY WITH INSERT



FLOWERPOT «DAMA»
WITH TRAY BALCONY



FLOWERPOT «GLORIA»
BALCONY

